



You know the feeling: a scratchy fabric, label or, in this case, the reverse side of embroidery can all be very irritating to the skin. But there is an easy and elegant remedy: simply use a soft embroidery inlay to cover the back of your embroidery and protect the skin from any unwanted discomfort.

### Madeira Comfort Wear

Comfort Wear is just what you're looking for and can be conveniently fixed onto the reverse of the embroidery by using a heat press or iron. Its adhesive agent will be activated again each time it is ironed and, as a result, will stick much longer than comparable products. E-ZEE Comfort Wear is available in black and white on rolls of 100 x 0.5 m.

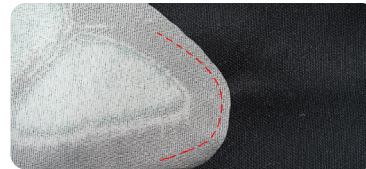
## Step-by-step guide: how to use Madeira Comfort Wear

What you need: Comfort Wear fusible soft inlay, iron or heat press, clean cloth

**1**

### Turn inside out

Turn the garment inside out to expose the back of the finished embroidery.

**2**

### Cut Comfort Wear

Cut a piece of Comfort Wear 1-2 cm larger than the embroidered design, making sure to round the corners.

**3**

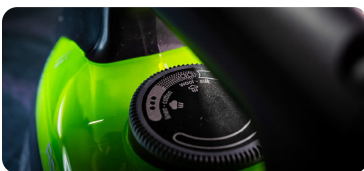
### Place the piece of inlay

Place the piece onto the back of the embroidery with the coated, heat-activated side down. The heat-activated side is rougher and shinier, so is easy to recognise.

**4**

### Use clean cloth to protect the embroidery

To protect the embroidery and the fabric/garment, we recommend placing a separate clean cloth under the front side of the embroidery.

**5**

### Fix it using a heat press or an iron

**Heat Press:** 150 - 160°C, 2-4 bar, approx. 15 sec  
**Iron:** 2 points with maximum steam, pressure and approx. 30 seconds.  
Allow to cool down before proceeding.



### Important information for use:

- Bonding conditions can vary depending on machinery and fabrics.
- Always run tests to establish your best individual settings.
- Ensure that the fabric can withstand the ironing temperatures.
- Heating above 160 °C for more than 30 seconds might harm the materials.

**Good to know:** Due to the differences in temperature resistance and finish of different fabrics, it is essential to run tests before starting production.